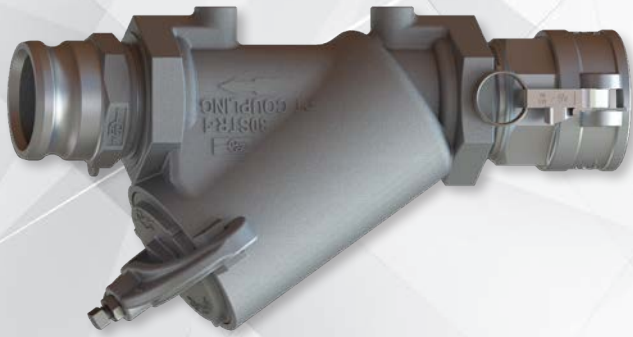




COUPLINGS AND MORE

STRAINERS



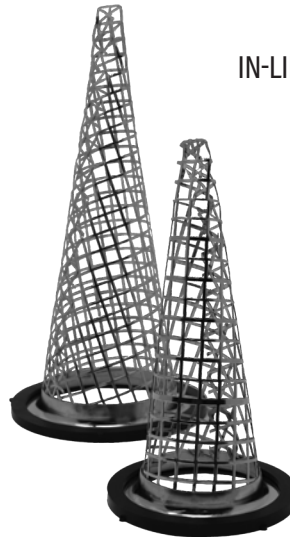
Straining media is essential for contaminate removal, safety purposes, and equipment damage prevention. PT offers a wide variety of strainer designs for specific applications.

In-line Coupler Strainers are created for the average 3" and 4" hose applications. The square pattern is designed for an improved flow while catching debris that could potentially damage pumps and other equipment in the system.

PT's Pump Filters are a versatile add-on to any female tapered NPT thread fitting to provide ample filtering for fluid applications.

Y-Strainer and T-Strainer units are multi-component filtration assemblies designed for ease of maintenance and component replacement. Available in a variety of sizes and materials for diverse application usage.

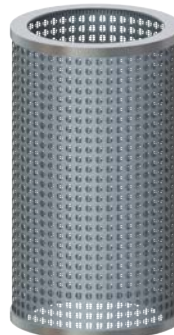
IN-LINE COUPLER STRAINERS



PUMP FILTER



Y-STRAINER MESH BASKET



Visit your local PT Representative
Call 1-800-654-0320

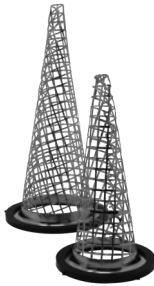
www.ptcoupling.com



In-line Coupler Strainers

In-Line Coupler Strainers were created for straining liquid media and slurry applications, that have a potential for clogging hoses and causing damage to fittings, equipment, tanks or storage containers. These 3 or 4 inch strainers, located securely inside of a PT coupler, have an advantage for overall flow rate due to larger grate openings. These strainers are made from Stainless Steel (304) with gasket options of Buna N or FKM materials (depending on media being transferred).

Strainer mesh design allows better flow rate, while preventing unwanted debris, increased strainer effectiveness with minimal clogging. Slotted gaskets allow for easier replacement for a continued long-term, consistently safe seal. Recommended with PT cam and groove coupler designs.



IN-LINE COUPLER STRAINER

In-Line Coupler Strainers				
Size	Part Name	Material	Gasket Option (Buna N)	Gasket Option (FKM)
3.00"	30-IN LINE COUPLER STRAINER*	Stainless Steel (304)	50176	50177
4.00"	40-IN LINE COUPLER STRAINER*	Stainless Steel (304)	50180	50181

* REPLACEMENT GASKETS AVAILABLE



PUMP FILTER

Strainer Filter - NPT Threaded Pump Filter						
Size	Part Name	Aluminum			Stainless Steel	
		¼" Holes	⅜" Holes	½" Holes	¼" Holes	½" Holes
1.50"	15P	60951500	☎	☎	☎	☎
2.00"	20P	60952000	☎	☎	64952000	☎
3.00"	30P	60953000	☎	☎	64953000	☎
4.00"	40P	60954000	60954002	60954001	64954000	64954001

Y-Strainers

Y-Strainers units require selection of Strainer Body Assembly <below> and Basket <next page> to create a filtration unit. When selecting the Y-Strainer options, care should be taken to match the size of the strainer to the hose ID. The media and particulate size will designate specific body and basket selected. Rated to 125 PSI.



Y-STRAINER BODY
(FULL ASSEMBLY)

Y-Strainer Body Assembly - Without Basket/Without Mount - NPT Thread X NPT Thread					
Size	Part Name	Aluminum	Stainless Steel	Ductile Iron	Polypropylene
0.75"	07STR-Y	☎	☎	38890700	37890700
1.00"	10STR-Y	☎	☎	38891000	37891000
1.50"	15STR-Y	38891500A	34891500	38891500	☎
2.00"	20STR-Y	30892000	34892000	38892000	37892000
3.00"	30STR-Y	38893000A	34893000	38893000	37893000
4.00"	40STR-Y	30894000	☎	38894000	☎

Y-STRAINERS CONT.



Y-Strainers Cont. - Body with mounting holes include two bosses with 1/2" UNC threads for easy mounting.

1/2" UNC Threads for Mounting



Y-STRAINER WITH MOUNT

Y-Strainer Body Assembly - Without Basket/With Mount - NPT Thread X NPT Thread			
Size	Part Name	Ductile	Stainless Steel
2.00"	20STR DUCT Y MOUNT	388921001	☎
3.00"	30STR DUCT Y MOUNT	388931001	☎
	30STR SS Y MOUNT	☎	348931001

Once your Y-Strainer Body Assembly is selected, then choose the Basket that fits your application from the tables below.

Y-Strainer Mesh Basket (Stainless Steel) - Gasket Seal (Buna N)								
Size	Part Name	5-14 Mesh	5-20 Mesh	5-40 Mesh	5-60 Mesh	5-80 Mesh	5-100 Mesh	Replacement Seal Kit (Buna N)
0.75"	07STR-5 MESH	3410014	☎	3410040	3410060	3410080	3410100	38891080
1.00"	10STR-5 MESH	3410014	☎	3410040	3410060	3410080	3410100	38891080
1.50"	15STR-5 MESH	3415014	☎	3415040	☎	☎	☎	38891580
2.00"	20STR-5 MESH	3420014	☎	3420040	3420060	3420080	3420100	38892800
3.00"	30STR-5 MESH	3430014	☎	3430040	3430060	☎	3430100	38893080 - AL & SS 38893002A - DUCT
4.00"	40STR-5 MESH	3440014	☎	3440040	☎	3440080	☎	38894980



Y-STRAINER MESH BASKET (SS)

Y-Strainer Mesh Basket (Polypropylene) - O-Ring Seal (EPDM)						
Size	Part Name	5-20 Mesh	5-40 Mesh	5-50 Mesh	5-80 Mesh	Replacement O-Ring (EPDM) Kit
0.75"	07STR-5P MESH	3700720	☎	3700740	3700780	37890407
1.00"	10STR-5P MESH	3701020	☎	3701040	3701080	37890410
1.50"	15STR-5P MESH	3701520	☎	3701540	3701580	37890415
2.00"	20STR-5P MESH	3701520	☎	3701540	3701580	37890415
3.00"	30STR-5P MESH	3703020	3703040	☎	☎	37890430



Y-STRAINER MESH BASKET (POLY)

Y-Strainer Body Assembly Replacement Parts - Clamps, Caps & Seals				
Size	Cap - Aluminum	Cap - Ductile	Cap - Stainless Steel	Clamp Kit - Ductile *
0.75"	☎	38890730	☎	☎
1.00"	☎	☎	☎	38891050
1.50"	38891530A	38891530	☎	38891550
2.00"	30892300	38892300	34892300	38892050
3.00"	38893300A	38893301	☎	38893050
4.00"	38894400A	38894300	☎	38894050



Y-STRAINER (REFERENCE ONLY)



CAP



CLAMP KIT

* DUCTILE ONLY MATERIAL AVAILABLE (FOR STRENGTH)





T-STRAINERS

T-Strainers

T-Strainers use three components (Strainer Body, Bulb Adapter and Mesh Basket) to create a filtration unit. When selecting the T-Strainer options, care should be taken to match the size of the strainer to the hose ID. The media and particulate size will designate specific body, bulb adapter and basket selections. These units feature PT's unique T-Strainer design, allowing quick and easy basket removal via cam and groove connection, versus threaded connections other manufacturers provide. Rated to 150 PSI.



T-STRAINER BODY
(FULL ASSEMBLY)

T-Strainer - With Bulb/With 80-Mesh Basket* - Female NPT Thread X Female NPT Thread					
Size	Part Name	Aluminum (Body)			Hard Coat Alum. (Body)
		HBS Cams	HB Cams	SLS Cams	HBS Cams
1.50"	30X15STDS	60903015S	6090000091	60900091L2	70903015S
2.00"	30X20STDS	60903020S	6090000092		70903020S

**80-MESH BASKETS ARE STANDARD FOR T-STRAINER ASSEMBLIES.
DIFFERENT MESH OPTIONS AVAILABLE, PLEASE CONTACT PT FOR SELECTIONS*



MESH BASKET

T-Strainer Mesh Basket Options	
Stainless Steel	
Mesh Desc - Mesh Size	Item No.
30STSC-12	60903131
30STSC-20	60903132
30STSC-40	60903133
30STSC-60	60903134
30STSC-80	60903130



BULB ADAPTER

Bulb Adapter (Replacements)	
Bulb Adapters	
Material	Item No.
Aluminum	60903000
Hard Coat Aluminum	70903000

Call your local PT Representative today or go online to find out how PT has solutions for your needs:

CALL 800-654-0320 / EMAIL: INFO@PTCOUPLING.COM

www.ptcoupling.com

